

AGENDA

Meeting: Calne Area Board
Place: Calne Hub & Library, The Strand, Calne, SN11 0RD
Date: Tuesday 10 March 2020
Time: 6.30 pm

The Area Board welcomes and invites contributions from members of the public. The chairman will try to ensure that everyone who wishes to speak will have the opportunity to do so.

If you have any requirements that would make your attendance at the meeting easier, please contact your Democratic Services Officer.

Refreshments and networking opportunity from 6:30pm.

Please direct any enquiries on this Agenda to Craig Player
craig.player@wiltshire.gov.uk, direct line 01225 713191 or email
craig.player@wiltshire.gov.uk

All the papers connected with this meeting are available on the Council's website at
www.wiltshire.gov.uk

Press enquiries to Communications on direct lines (01225) 713114 / 713115.

Wiltshire Councillors

Cllr Christine Crisp, Calne Rural (Chairman)
Cllr Alan Hill, Calne South and Cherhill (Vice-Chairman)
Cllr Ian Thorn, Calne Central
Cllr Tom Rounds, Calne North
Cllr Tony Trotman, Calne Chilvester and Abberd

Recording and Broadcasting Information

Wiltshire Council may record this meeting for live and/or subsequent broadcast on the Council's website at <http://www.wiltshire.public-i.tv>. At the start of the meeting, the Chairman will confirm if all or part of the meeting is being recorded. The images and sound recordings may also be used for training purposes within the Council.

By entering the meeting room you are consenting to being recorded and to the use of those images and recordings for broadcasting and/or training purposes.

The meeting may also be recorded by the press or members of the public.

Any person or organisation choosing to film, record or broadcast any meeting of the Council, its Cabinet or committees is responsible for any claims or other liability resulting from them so doing and by choosing to film, record or broadcast proceedings they accept that they are required to indemnify the Council, its members and officers in relation to any such claims or liabilities.

Details of the Council's Guidance on the Recording and Webcasting of Meetings is available on request. Our privacy policy can be found. [here](#).

Parking

To find car parks by area follow [this link](#). The three Wiltshire Council Hubs where most meetings will be held are as follows:

County Hall, Trowbridge
Bourne Hill, Salisbury
Monkton Park, Chippenham

County Hall and Monkton Park have some limited visitor parking. Please note for meetings at County Hall you will need to log your car's registration details upon your arrival in reception using the tablet provided. If you may be attending a meeting for more than 2 hours, please provide your registration details to the Democratic Services Officer, who will arrange for your stay to be extended.

Public Participation

Please see the agenda list on following pages for details of deadlines for submission of questions and statements for this meeting.

For extended details on meeting procedure, submission and scope of questions and other matters, please consult [Part 4 of the council's constitution](#).

The full constitution can be found at [this link](#)

For assistance on these and other matters please contact the officer named above for details

	Time
<p>1 Chairman's Welcome and Introductions</p> <p>The Chairman will welcome everyone to Calne Area Board and introduce the Councillors and Officers present.</p>	6.30 pm
<p>2 Apologies for Absence</p> <p>To receive any apologies or substitutions for the meeting.</p>	
<p>3 Minutes (<i>Pages 1 - 6</i>)</p> <p>To approve and sign as a correct record the minutes of the meeting held on 21 January 2020.</p>	
<p>4 Declarations of Interest</p> <p>To receive any declarations of disclosable interests or dispensations granted by the Standards Committee.</p>	
<p>5 Chairman's Announcements (<i>Pages 7 - 18</i>)</p> <p>The Chairman will provide information about:</p> <ul style="list-style-type: none"> • Families and Children Transformation (FACT) Programme • Community Governance Review Consultation • Changes to Kerbside Recycling Collection • Coronavirus: Update and Information • A summary of the government's £220m "better deal for bus users" and consultation information 	6.40 pm
<p>6 Partner Updates (<i>Pages 19 - 42</i>)</p> <p>To receive an update from our partners.</p>	6.45 pm
<p>7 Families and Children's Transformation (FACT) Programme</p> <p>To receive a presentation from Adele Owens, System Thinking Practitioner at Wiltshire Council, on the FACT programme's work and learning in the Calne community area.</p>	7.00 pm
<p>8 Our Community Matters (<i>Pages 43 - 50</i>)</p> <p>To receive updates and consider recommendations arising from the following local JSA priorities/working groups:</p> <ul style="list-style-type: none"> • Older People/Carer's Champion – Diane Gooch • Calne Health and Wellbeing Group – Alison Ingham • Air Quality Working Group – Cllr Hill • Calne Our Place – Naomi Beale (Chairman) • Calne Community Safety Forum – Glenis Ansell (Chairman) 	7.30 pm

- Calne S106 Working Group – Cllr Trotman
- Calne Community Area Transport Group – Cllr Crisp

9 **Area Board Funding** (*Pages 51 - 66*)

7.45 pm

To consider two applications to the Community Area Grants Scheme, as follows:

- Waste Not Want Not, seeking £798.75 for new IT equipment
- YMCA Humpty Dumpty Nursery, seeking £3,500 towards their Early Years Garden Project
- Calne in Tune - Music Arts and Media Project, seeking £4,938 towards equipment costs
- Cherhill Parish Council, seeking £500 for a Yatesbury Village notice board

To consider four applications to the Youth Grants Scheme, as follows:

- Calne Town Council, seeking £806.40 towards joint CMAS commissioning for a pilot youth club
- Calne Pocket Park and Community garden, seeking £2,725 for the Calne Pocket Park Youth Performance Skills Project
- A Place 4 Us, seeking £5000 for the Calne Disability Youth Club

To note the award of £319 from the Youth Grants Scheme to Calne Community Area Fairtrade Group towards promotion and prizes for a youth competition as part of Fairtrade Fortnight 2020 under delegated authority.

To consider a recommendation to ringfence £4,000 of Health & Wellbeing funding for the continuation of the Share Pot Scheme.

10 **Urgent items**

Any other items of business which the Chairman agrees to consider as a matter of urgency.

11 **Close**

8.00 pm

The next meeting of Calne Area Board will be on Tuesday, 23 June 2020 at Calne Hub & Library, The Strand, Calne, SN11 0RD.

MINUTES

Meeting: Calne Area Board
Place: Calne Hub & Library, The Strand, Calne, SN11 0RD
Date: 21 January 2020
Start Time: 6.30 pm
Finish Time: 8.45 pm

Please direct any enquiries on these minutes to:

Craig Player craig.player@wiltshire.gov.uk, Tel: 01225 713191 or (e-mail) craig.player@wiltshire.gov.uk

Papers available on the Council's website at www.wiltshire.gov.uk

In Attendance:

Wiltshire Councillors

Cllr Christine Crisp (Chairman), Cllr Alan Hill (Vice-Chairman), Cllr Ian Thorn, Cllr Tom Rounds and Cllr Tony Trotman

Wiltshire Council Officers

Mike Stuart (Health & Wellbeing Manager), Alexa Davies (Community Engagement Manager), Craig Player (Democratic Services Officer), Martin Litherland (Head of Service Waste Management) and Paula Smith (Community Campus & Hub Support Officer)

Town and Parish Councillors

Calne Town Council – Howard Marshall
Bremhill Parish Council – Isobel McCord
Calne Without Parish Council – Ed Jones
Cherhill Parish Council – David Evans
Compton Bassett Council – Jane Marshall

Partners

Wiltshire Police – PC Steve Carroll and Inspector James Brain
Wiltshire Fire and Rescue – Darren Nixon

Total in attendance: 30

<u>Agenda Item No.</u>	<u>Summary of Issues Discussed and Decision</u>
1	<p><u>Chairman's Welcome and Introductions</u></p> <p>The Chairman welcomed everyone to Calne Area Board and introduced the Councillors and Officers present.</p>
2	<p><u>Apologies for Absence</u></p> <p>Apologies were received from Katy Brown, Alison Ingham and Mel Wilkins.</p>
3	<p><u>Minutes</u></p> <p>The minutes of the meeting held on 12 November 2019 were approved and signed as a correct record.</p>
4	<p><u>Declarations of Interest</u></p> <p>Cllr Ian Thorn declared an interest in item no. 11 (Trustee of Wiltshire Music Centre). He declared he would not participate in the debate or vote on Wiltshire's Music Centre's application.</p>
5	<p><u>Chairman's Announcements</u></p> <p>The Chairman drew attention to the written announcements included in the agenda pack:</p> <ul style="list-style-type: none"> • Wiltshire Family and Community Learning • Flood Resilience in Your Local Area • Wiltshire Green Pledge • Warm and Safe Wiltshire • Joint Strategic Needs Assessment • Motiv8 Children and Young People's Service • Hilmarton Rural Housing Needs Survey
6	<p><u>Partner Updates</u></p> <p>1. Wiltshire Police – the written update is attached to these minutes and the following points were noted:</p> <ul style="list-style-type: none"> • James Brain was introduced as the Calne community area's new Inspector, taking over from Mark Luffman who would be covering the Wootton Bassett community area. • It was explained that community policing was seen as a priority and that in bringing in another Inspector residents can expect a better local service and level of accountability. • The Community Policing Model had been changed. Steve Carroll

would become the Calne community area's Community Policing Officer and would be supported by PCSOs and a Neighbourhood Sergeant.

- Police officers were now working in Calne Leisure Centre on an ad hoc basis. They would continue to start and finish their duties in Chippenham.
- The team had successfully carried out several closure orders in the Calne area. Those vulnerable targets of dangerous drug networks were now working with relevant partners to receive the assistance they required.
- While the force does make arrests off the back of defective cars, it was noted that there was plenty of work going on behind the scenes and arrests were not by chance.

3. Dorset and Wiltshire Fire and Rescue Service – the written update and following point was noted:

- The relocation of the Fire Station to the relief road had not moved forward and at this moment in time there were no concrete plans to make this happen.

4. NHS Wiltshire Clinical Commissioning Group – the written update was noted.

5. Healthwatch – the written update was noted.

6. Bremhill Parish Council – the following point was noted:

- Concerns had been raised to the relevant officers regarding the impact of the Housing Infrastructure Bid on the parish and Neighbourhood Plan.
- Speed indicator devices were to be installed across the parish to combat speeding offences.

7. Calne Without Parish Council – the following points were noted:

- There was a vacancy for a councillor position and an election would take place imminently.
- That consultation was underway regarding the Community Governance Review and residents were encouraged to get involved in the process.

8. Compton Basset Parish Council – the following points were noted:

- The Parish Council had undertaken a speeding survey and were now looking at what steps they could take to combat speeding offences.
- The Neighbourhood Plan review was underway and appropriate actions would be taken when necessary.

	<p>9. Calne Town Council – the following point was noted:</p> <ul style="list-style-type: none"> Residents were encouraged to ensure their views are heard ahead of the Northern Area Planning Committee which will consider the second Churchill Retirement Living planning application and the Planning Appeal Hearing for the first application.
7	<p><u>Police and Crime Commissioner's Precept Consultation Update</u></p> <p>Jerry Herbert, Deputy Police and Crime Commissioner, gave an update on the Office of the Police and Crime Commissioner's proposals for the precept for the forthcoming year. You can have your say via an online survey by following this link: www.wiltshire-pcc.gov.uk</p> <p>Matters highlighted in the course of the update and discussion included: the role of the PCC; what had been delivered this year; what the PCC was proposing; why the increase is needed; the focus on community policing and police visibility in local areas.</p>
8	<p><u>Community Presentations</u></p> <p>Mike Stuart gave an update on the Calne Leisure Centre refurbishment.</p> <p>Matters highlighted in the course of the update and discussion included: background to the project; what will be achieved by the project; what the leisure centre will look like; build progress; upgraded fitness suite equipment and the current membership offer.</p>
9	<p><u>Changes to Kerbside Collection</u></p> <p>Martin Litherland, Head of Service for Waste Management at Wiltshire Council, gave a presentation on the changes to waste and recycling collections planned to take place in February 2020.</p> <p>Matters highlighted in the course of the update and discussion included: what will change; why the changes are being implemented; what else you can recycle; how the council can help spread this message in your local community; the End Destination Charter; government plans to reduce, reuse and recycle; how to dispose of food waste and future plans for food waste collection.</p>
10	<p><u>Our Community Matters</u></p> <p>Councillors then provided an update on community issues and progress on Calne Area Board working groups as follows:</p> <p>Older People/Carer's Champion – Diane Gooch</p> <p>It was noted that:</p>

	<ul style="list-style-type: none"> • A survey will be circulated imminently to residents over the age of 55 to gather information on what services they would like to see provided in the future. • An information pack is being developed giving information on activities and services that are available in Calne. • Older People/Carer's Champions across Wiltshire have met with Cllr Alison Bucknell and Cllr Laura Mayes to discuss what they have done over the past year and what they plan to do going forward. <p>Calne Community Area Transport Group – Cllr Crisp</p> <p>Resolved</p> <p>To adopt the recommendations of the Community Area Transport Group as outlined in the report.</p>
11	<p><u>Area Board Funding</u></p> <p>Consideration was given to the one application made to the Community Area Grants Scheme, two applications for Health & Wellbeing funding and two applications for Youth funding.</p> <p>Resolved</p> <ol style="list-style-type: none"> 1. To award Castle Fields Canal and River Park Association £3696.10 for the Castle Fields Pocket Park Upgrade 2. To award The Anybody Can Cook Community Interest Company £1000 for Share a Pot 3. To award Wiltshire Music Centre £2500 for the Celebrating Age Wiltshire Creative Community Group in Calne 4. To award Youth Adventure Trust £1511.27 for Vulnerable Young People from Calne Fulfilling their Potential 5. To award Calne Clean Up Crew £500 for its Fragments of Identity Community Art Project
12	<p><u>Urgent items</u></p> <p>Consideration was given to the an application for Health & Wellbeing funding.</p> <p>Resolved</p> <p>To award Calne Pocket Park £400 for a mobile farm for coffee mornings for senior citizens.</p>
13	<p><u>Close</u></p> <p>The next meeting of Calne Area Board will be on Tuesday, 10 March 2020 at Calne Hub & Library, The Strand, Calne, SN11 0RD.</p>

Chairman's Announcements

Subject:	Families and Children's Transformation (FACT) Programme Earliest Support workstream update
Web contact:	FACT@wiltshire.gov.uk

The purpose of this announcement is to notify members of the area board about the work of the FACT programme, raise awareness of the Early Support initiatives stemming from this work and to encourage engagement at a local level.

The Families and Children's Transformation Programme is a joint programme with the local authority, clinical commissioning group and police; the services they commission, voluntary sector agencies, families, children and carers. The outcomes of the 6 workstreams are:

- Community Safety for Young People
- A Good Education for All
- Best Start in Life
- Integrated Multi Professional Early Support
- Whole Life Pathway
- Core Skills and Single Approach

Over 27 individual projects sit within these workstreams to promote social mobility, build resilience and deliver more efficient and impactful services. All of these workstreams compliment the council's wider business plan objectives.

As part of the work ongoing within the ***Integrated Multi Professional Early Support*** workstream, a project entitled Integrated Earliest Support in Communities (IESiC) began looking at ways in which the multiple contacts the police, health and social care were receiving and having to react to could be reduced. It was acknowledged that when families have limited knowledge of or access to the earliest forms of support in their communities their problems and concerns can easily escalate subsequently requiring frequent and costly intervention from statutory services.

The IESiC work is aimed at supporting all members of the community, children, families and individuals, making it easier for them to find the right help at the right time for them.

The goal is for the whole community and all local people to support their community members knowing where help is available, that way they can stop any vulnerability escalating as families are supported within their community with the support that's already in place or that we may identify is needed.

Chairman's Announcements

Integrated Earliest Support for Communities (IESiC)

There are 3 main principles which have been co-produced, with Calne as the initial innovation site. Sign up to the principles has been received from the Calne community group, the Strategic Group and the FACT Operational and Executive Boards. A briefing has also been given to the Children and Young Peoples Safeguarding Panel chaired by the Lead Member for Children and Education, Pauline Church.

1. The requirement for a Digital information/support platform for local information searchable by location and type to provide a consistent, central point of information accessed by professionals and families alike. This will be for all age groups children and adults, and be the platform used within the council and partnership as a whole (links to existing websites to be included).
2. The requirement for a local Community Connector/Navigator
 - Provide information to families
 - Support and outreach to families
 - Support for agencies
 - Keep local information on platform up to date and relevant
 - Develops community resources within locality

This principle will build on and learn from the established roles such as Local Area Coordinators and Social Prescribers.

3. The requirement for Community Development and Joint Partnership Commissioning

The is to ensure joined up commissioning between partners and the voluntary section in order that community areas receive the support they require and that commissioning strategies are joined up and well coordinated.

Although we are looking at Calne as a pilot area initially the intention is to roll the work out across all community areas in Wiltshire.

If anyone has an interest in supporting the mapping of community clubs, groups and services for their local area or collating who is already undertaking community connecting both formally and informally then please get in touch by contacting FACT@wiltshire.gov.uk.

More information on the Families and Children's Transformation programme can be found on our website <http://www.wiltshire.gov.uk/children-young-people-fact>.

Chairman's Announcements

Subject:	Community Governance Review - Consultation
Web contact:	CGR@wiltshire.gov.uk

As detailed in Briefing Notes [19-032](#) and [20-01](#) circulated to Wiltshire Councillors and Town and Parish Councils, Wiltshire Council is currently undertaking a Community Governance Review. This is a process where the governance arrangements or boundaries of a parish may be altered by Wiltshire Council. This requires a vote by Full Council, with the process overseen and recommendations made by the Electoral Review Committee.

Following a pre-consultation survey in January and February 2020 regarding proposals for governance and boundary changes received by the council, the Committee will be preparing draft recommendation on changes it believes should be made, if any.

It will then undertake a public consultation on those draft recommendations from around **late-April to the end of May** – a briefing note and press releases will be circulated late to confirm dates.

Any interested person or party may respond to the consultation, which will be available on the council's website at <http://www.wiltshire.gov.uk/council-democracy-cgr> . Hard copies will also be made available.

The areas under review, and so potentially to receive recommendations for changes to their arrangement, are as follows:

Calne Without, Chippenham, Chippenham Without, Yatton Keynell, Langley Burrell Without, Lacock, Kington St Michael, Melksham, Melksham Without, Trowbridge, Hilperton, Southwick, North Bradley, West Ashton, Salisbury, Netherhampton, Pewsey, Seend, Wilcot, Manningford, Woodborough, Huish

Anyone who lives in an area which is recommended to be transferred from one parish to another, or where a merger is recommended, will be written to directly.

Public meeting dates have been arranged as follows to discuss the following recommendations:

Trowbridge and surrounding parishes

Council Chamber, County Hall, Trowbridge – 6 May 2020 1900-2100

Melksham, Melksham Without and Seend

Shaw Village Hall, Shaw, Melksham Without – TBC 1900-2100 Melksham,

Melksham Without and Seend

Melksham United Church, Melksham – 13 May 2020 1900-2100

Calne Without (warding/New parish Derry Hill)

Calne Library, Calne – 14 May 2020 1900-2100

Chairman's Announcements

Parish name changes

On the same webpage above there is also a survey regarding proposals to change the name of the following parishes:

Fyfield and West Overton

Cheverell Parva

Fittleton

People are encouraged to respond to these proposals by the end of May 2020.

Chairman's Announcements

Subject:	Changes to Kerbside Recycling Collections
Web contact:	www.wiltshire.gov.uk/rubbish-and-recycling

Wiltshire Council is introducing improvements to make it even easier for people to use the kerbside recycling collection service.

The way in which recyclable materials are collected from the kerbside will change and we are contacting residents to tell them when their services will change. The good news is that residents will be able to place more materials in the blue lidded bin.

Many households will also see their collection day change as we will be making the collection routes more efficient, so there will be fewer collection vehicles on the road. This will help to further reduce the council's impact on the environment as part of its pledge to become carbon neutral by 2030.

Letters are being sent to every household in Wiltshire to inform them of their new collection day. The letters should arrive between 24 February and 6 March. Once residents have received their letters they can go online and check their collection day and print off a bespoke collection calendar at www.wiltshire.gov.uk/rubbish-and-recycling Residents who know of any neighbours who don't have access to the internet could check whether they need someone to download a calendar for them. Alternatively, residents can telephone the council on 0300 456 0102 to ask that we print a calendar and post it to them. The first collections based on the new system will take place from 9 March to 20 March.

Residents will receive a leaflet with the letter containing more information about the changes, as well as a sticker explaining which materials can be placed in the blue lidded bin.

In summary, the new service is:

- In the blue lidded bin you can place cans, tins, aerosols, paper, cardboard, cartons, foil, plastic bottles, pots, tubs and trays
- In the black box you can place glass bottles and jars and bagged, dry textiles
- The blue lidded bins and black boxes will be emptied fortnightly on the same day, using new recycling collection vehicles.

There will be no change to the household waste collection service or the chargeable garden waste collection service. Collection days for these services will remain the same.

Because the vehicle rounds are changing it is important that residents put their bins and boxes out by 7am, as the times of their collections may change.

If residents think they may not have enough room in their blue lidded bin, we are asking them to try to squash and flatten as much of their recycling as possible for the

Chairman's Announcements

first few collections to see if this is a suitable solution. Larger or additional blue lidded bins will not be delivered until residents have first tried the new service and demonstrated to themselves that, despite squashing and flattening materials, they need the additional capacity. They can then request a larger or additional blue lidded bin via the Wiltshire Council website.

Email: wasteandrecycling@wiltshire.gov.uk

Telephone: 0300 456 0102

Website: www.wiltshire.gov.uk/rubbish-and-recycling

Chairman's Announcements

Subject:	Coronavirus: Advice and Information
Web contact:	https://www.gov.uk/guidance/wuhan-novel-coronavirus-information-for-the-public

As of 26 February 2020 there have been no cases of Coronavirus in Wiltshire or the South West, and the risk to individuals remains low.

Due to the changing picture please check for the latest national updates and advice regarding Coronavirus from the Government website should you have any queries:

[GOV.UK: Coronavirus \(COVID-19\): latest information and advice](#)

[GOV.UK: Coronavirus \(COVID-19\) FAQs](#)

Chairman's Announcements

Subject:	A summary of the government's £220m "better deal for bus users" and consultation information
Web contact:	buses@wiltshire.gov.uk

A summary of the governments £220m "better deal for bus users" and how to make suggestions for improved or enhanced bus services in Wiltshire

The government has recognised the important role that buses play and has announced a £220m competitive funding pot available for local authorities to bid against. This [link](#) provides the detail behind its "better deal for bus users" approach, which is summarised below, outlining Wiltshire Councils position for this exciting opportunity.

National bus strategy

The government has recognised that in investing in the bus, it requires a workable national bus strategy. It is going to use this round of bidding to help shape that strategy and will further develop it throughout this year and next.

Bus priority

It is recognised that the bus plays a pivotal role in enhancing the economy, with bus users generating £64billion of economic output each year. However, many local authorities do not always provide the bus with the priority it requires when designing road schemes. Therefore, all new road investments in England which receive central UK government funding, will be required to either support bus priority measures, or explain why doing so would not be necessary, or appropriate in that instance. All future funding bids will need to explicitly address this issue.

As well as providing local authorities with funding to invest in bus priority measures, the government will refresh the department's guidance to provide up to date, and relevant advice on prioritising those vehicles which can carry the most people. This will ensure local authorities have the information they need to improve the speed of bus journeys, and further support the case for bus priority measures.

Fares and payment

The government is actively looking to work with local authorities and operators to identify ways to encourage operators to implement multi-operator tickets and fares caps, either in relation to the price paid for individual journeys or a daily or weekly cap (so you never pay more than the price of a daily or weekly ticket regardless of the number of journeys taken).

To make it easier for passengers to pay for their journey on the bus, the government will work with industry to ensure that all buses accept contactless payments. The 5 largest bus companies have already rolled-out contactless payment devices across their networks, as have many medium-sized operators.

In Wiltshire the vast majority of all bus services have contactless pay facility. Those few remaining services that don't will do so during 2021 and all future tenders will require suppliers to provide contactless payment facilities.

Passenger information and publicity

One of the recognised barriers to catching the bus is that there is not always enough information available and when it is, it might be inaccurate, or difficult to understand. As part of its "Bus Open Data" programme, the government is currently developing a new bus open data portal, which will contain information on bus services for use by app developers. Significant progress

Chairman's Announcements

has been made, with the intention that fares, and location data will be available from January 2021.

Wiltshire Council already contributes to the portal through its commitment, along with all other local authorities in the South West and bus operators, to Traveline Southwest, where we have been feeding data into a system for many years now, that produces timetable, fare and real time passenger information. We are also about to invest in a replacement programme for the real time passenger information displays that can be found at bus stops informing the bus user when the next bus is arriving. Added to this, we are about to employ, on a part time basis, a post responsible for marketing the bus in Wiltshire, in partnership with key bus suppliers.

£5 billion fund announced

Following the announcement of the £220m a further package of £5 billion is to be invested over 5 years and will boost bus services by focusing on a range of priorities, set to include:

- Higher frequency services, including evenings and weekends, to make it easier and less restrictive for people to get around at any time of day
- More 'turn up and go' routes where, thanks to higher frequency, people won't have to rely on timetables to plan journeys
- New priority schemes will make routes more efficient, so that buses avoid congested routes and can speed passengers through traffic
- More affordable, simpler fares
- At least 4,000 new Zero Emission Buses to make greener travel the convenient option, driving forward the UK's progress on its net zero ambitions
- over 250 miles of new, high-quality separated cycle routes and safe junctions in towns and cities across England; and
- dozens of new 'Mini-Holland' schemes to transform town centres across the country and make them safer to get around

The details of this significant fund will be made available in the spending review later this year but reaffirms this governments priority towards bus.

What are the available funds?

Superbus networks (up to £70m available)

The primary objective of this £70m fund is to increase bus patronage in an urban area through a package of measures covering bus priority, reducing bus fares and increasing service frequencies. Unfortunately, Wiltshire does not qualify, as it requires the money to be used on one town, or city, with a population of more than 75,000 people.

Tackling air quality and greenhouse gas emissions (up to £50m available)

The government are seeking expressions of interest from local authorities and bus operators in developing an all-electric bus town or city. This will see an entire place's bus fleet changed over to zero emission capable buses. The town, or city, will serve as a model for zero-emission bus travel and feed into the overarching national bus strategy.

As many buses as possible are to be exclusively electric, with scope to test innovations such as longer distance hybrids, which operate in electric-only mode within the town or city. Local authorities will need to show how this supports their wider plans for public transport in the town or city. Up to £50 million will be invested to contribute to new buses and the supporting infrastructure.

Chairman's Announcements

From Wiltshire Councils perspective this would support our pledge to be carbon neutral by 2030 and the wider environmental improvement. This will however be a challenge, as there are no settlements that readily meet the requirements, as set out in the bid criteria. Salisbury would however be the most obvious choice, and discussions are to be had with representatives of the GoAhead Group in the coming weeks to determine whether such a scheme might be viable for Salisbury.

On-demand services (up to £20m available)

To trial on-demand services in rural and suburban areas the government has established a fund of up to £20 million. Demand responsive transport (DRT) services have been used for some time to replace infrequent, traditional services which do not meet a local community's specific needs, with ones which can get closer to where people live, at a time convenient for them.

Wiltshire Council has significant experience in this area and still currently operates DRT. It is not possible at this stage to determine exactly what an expression of interest would look like, or include, but officers are discussing what needs are not currently met and where perhaps existing DRT could be improved. We would be very keen on submitting a bid for this and building upon our extensive experience of DRT.

Supporting bus services (up to £30m available)

Much of this funding is for experimental projects and a lump sum of £671,171 has been specifically allocated to Wiltshire Council to improve local bus services over a 12-18 month period and it is this funding which we are seeking advice from elected members and Town and Parish Councils on the best way to spend it. This briefing will also be sent to Community Engagement Managers and Area Boards.

The Government has informed us that it expects this funding to be used to improve the provision of local bus services in one or more of the following ways:

- increasing evening or weekend frequencies, or supporting additional seasonal services in tourist areas;
- restoring lost bus routes, where most needed, to ensure people have access to public transport services;
- supporting new bus services, or extensions to current services, to access e.g. new housing, employment opportunities, healthcare facilities etc.

The Government also expects us to provide them with an outline of how the money will be used before they release it to us but has given us very little time to do this. We can therefore only do a very basic consultation exercise in the time available, which is why we need your assistance.

We would therefore be grateful to receive from you, details of any requests you have received for bus service improvements, that you believe are causing problems for residents in your area and which you are confident would be well used by them if provided. Please email this information direct to Wiltshire Council's Passenger Transport Unit at buses@wiltshire.gov.uk by **Friday 27th March 2020**, so that they can assess the feasibility of introducing these on an experimental basis using this funding.

Whilst compiling these requests, please bear in mind that this funding is time limited, with no guarantee that further funding will be available at the end of the experimental period to allow the improvements to continue. Please also bear in mind that use of this money will need to be spread around the County and so requests for small improvements to existing services are likely to be more successful than those for completely new all-day services, which could cost in the region of £150,000 per annum to operate and be difficult to resource.

Please accept our apologies for the short timescale for this consultation, but the deadlines have been imposed upon us by the Department for Transport and are necessary in order for us to be able to claim the funding in good time to spend during the next financial year. If you wish to discuss this request in more detail, or obtain guidance on the feasibility of a

Chairman's Announcements

suggestion before submitting it, please ring Wiltshire Council's Bus Network Manager on 01225 713454 or email him at buses@wiltshire.gov.uk.

The government are hosting a series of events in February and March to further explain the detail behind the schemes, where Wiltshire will be represented. If there is anything of note from those meetings members, town and parish councils will be updated.

WILTSHIRE POLICE

CPT Calne Area Briefing

Calne Area Community Policing

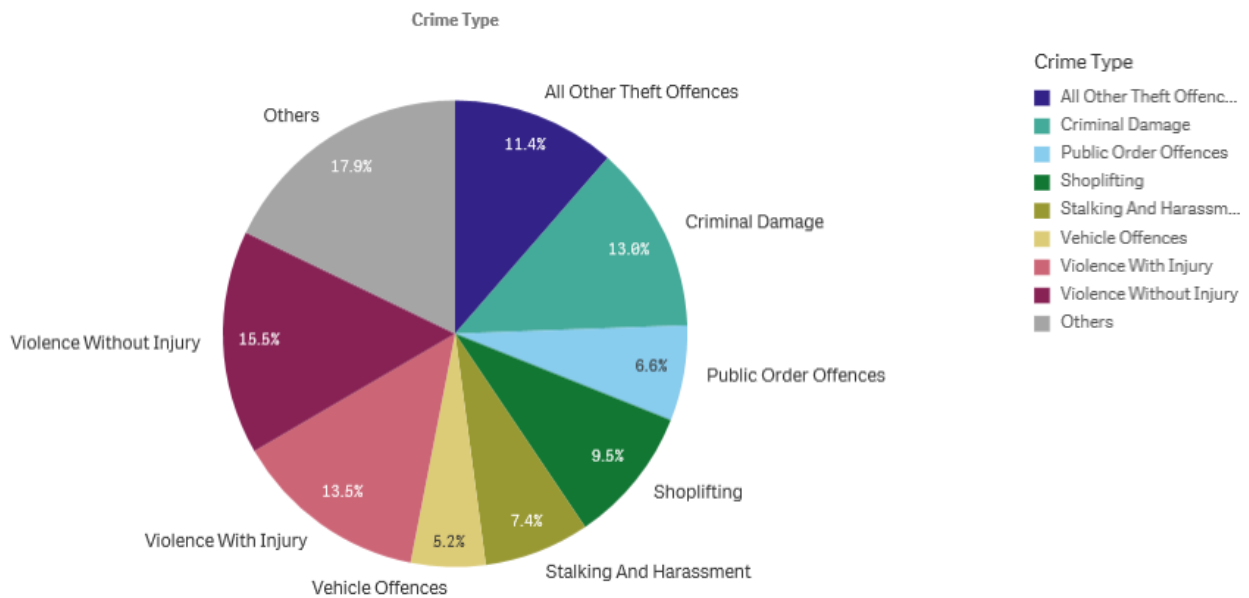


Proud to serve and protect our communities

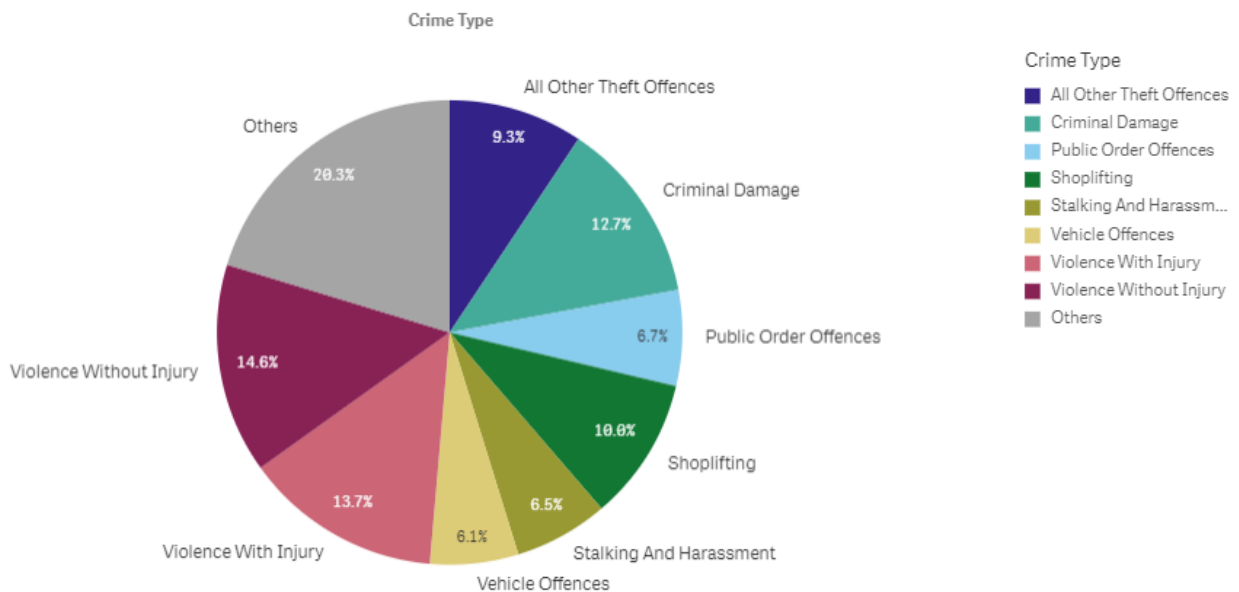
February/March 2020

PERFORMANCE

Your Area - Five Highest Crime Groups (Previous 12 months)



Force Area - Five Highest Crime Groups (Previous 12 months)



Chippenham CPT - Crime and incident demand for the 12 months to January 2020

WILTSHIRE POLICE

CPT Calne Area Briefing

Calne Area Community Policing



Proud to serve and protect our communities

February/March 2020

Force-wide

- Wiltshire Police has had an increase in the volume of recorded crime by 2.8% in the 12 months to January 2020 and continues to have one of the lowest crime rates in the country.
- Our service delivery remains consistently good.
- In January, we received 8,415 999 calls which we answered within 4 seconds on average and 12,699 CRIB calls which we answered within 50 seconds on average.
- In January, we also attended 1,470 emergency incidents within 10 minutes and 27 seconds on average.
- Wiltshire Police has seen a 5% reduction in vehicle crime and 10% in residential burglaries in the 12 months to January 2020.
- The Crime Survey of England & Wales recently ranked Wiltshire as one of the top forces (78.3%) nationally for public confidence. It covers the 12 months to March 2019.
- The publication can be found here: WWW.CRIMESURVEY.CO.UK

For more information on Wiltshire Police's performance please visit:

PCC's Website - <https://www.wiltshire-pcc.gov.uk/article/1847/Performance>

HMICFRS Website - <https://www.justiceinspectorates.gov.uk/hmicfrs/police-forces/wiltshire/>

Police.uk - <https://www.police.uk/wiltshire>

WILTSHIRE POLICE

CPT Calne Area Briefing

Calne Area Community Policing



Proud to serve and protect our communities

February/March 2020

For information on what crimes and incidents have been reported in Chippenham Area Community Policing area, visit <https://www.police.uk/wiltshire/CPT%20Chippenham/> to view a crime and incident map and find links to more detailed data.

HIGH LEVEL CPT UPDATES:

LOCAL NEWS

On Sunday 1st March, three teenagers, two boys and one girl spent some of their morning cleaning off graffiti in Mill Street and Station Road in Calne.

This positive action was taken in partnership with Calne Town Council after the youths had been captured on the Calne town council CCTV cameras spraying abusive graffiti in these locations.

After social media appeals, working closely with our local schools and with the help of members of the public assisting with our investigations the offenders responsible were identified.

The youths admitted to their involvement, and at the request of Calne Town Council the offences of criminal damage were resolved using the Community Resolution process, giving youths the opportunity to make represents for their actions.

PCSO Mark Cook says: "I would like thank all the members of the community who contacted us in regards to this matter. It's reassuring to know that behaviour of this nature will not be tolerated. Our town is a safe and clean place to live, and with actions taken like this, it will hopefully remain this way.

"The "broken window syndrome" is one of the fundamental principles of community policing. In short, studies showed that crime and disorder is more likely to rise in a area which is run-down. If an area is clean and tidy the community is encouraged to continue to have pride in their area reducing crime, and the fear of crime.

"All the youths responsible have shown remorse for their actions, and stated they would not be repeating their behaviour in the future."

"I would also like to thank the Calne CCTV Manager and volunteers who work tirelessly behind the scenes assisting us in keeping Calne a safe place to live and work."

On 02/03/2020 at 08:12hrs, we received a request to assist our Marlborough colleagues after a male was sighted with two dogs in a yellow Peugeot Polo the area of Avebury and Yatesbury. The male was believe to be pouching using the two Lurcher type dogs to chase other animals in the open fields.

Unfortunately, it's believed that a deer had been captured by one of the dogs resulting in the deer being killed.

Chippenham Response, Neighbourhood, dog section and firearms officers attended the area and located the vehicle on the A4 at Cherhill.

WILTSHIRE POLICE

CPT Calne Area Briefing

Calne Area Community Policing



Proud to serve and protect our communities

February/March 2020

The vehicle involved was seized for being used in crime. One male, 60yld from Bristol was arrested on suspicion of trespass in pursuit of game and taken to Melksham Custody.

The two Lurcher type dogs were then conveyed to a specialist Bristol dog's kennel due to one being of an aggressive nature.

On the 19/02/2020 at 00:41hrs, a silver Volkswagen Gold was stopped on School Road in Calne due a report that the driver was driving whilst under the influence of alcohol.

Upon officers conferring with the driver a strong smell of cannabis was coming from within the vehicle. Officers requested that the driver provided a drugs wipe, which has tested positive for cannabis. The driver, a 35 year old local male was arrested on suspicion of driving a motor vehicle whilst unfit through drink or drugs. The driver was also found in possession of a small amount of cannabis. He has received a fixed penalty ticket for £90 for the offence of being found in possession of a class B drug.

Following on from this vehicle stop. The vehicle was searched where a quantity of cannabis was located within the vehicle. A 37 year old male from Chippenham will attend Chippenham police station at a later date to be interviewed for the offence of being found in possession of a Class B drug.

Theft.

On the 19/02/2020 17:00hrs and 20/02/2020hrs 06:15hrs in Lansdowne Close, Calne

Unknown suspect/s have stolen 3 fold down panels from a tipper van and a large roll of lead which was stored within the back of the vehicle. The suspects have also smashed the cab window. A number of tools have also been stolen from within van.

Tools listed : A Stihl TS50 petrol disc cutter, two stroke, orange. A Paslode IM500 nail gun and case.

Theft.

On the 25/02/2020 between the times of 10:20hrs and 10:25hrs in Bishop Road, Calne.

Unknown male suspects have pulled up outside a property in a white van and proceeded to load it with electrical cable which had been stored in a front garden by the owner.

The males were described as:

Suspect 1: White male, tall, stocky, aged 30 to 40 wearing a blue shirt.

Suspect 2 White male, little, heavy build, wearing a white shirt. Both males spoke with an eastern European accent.

WILTSHIRE POLICE

CPT Calne Area Briefing

Calne Area Community Policing



Proud to serve and protect our communities

February/March 2020

On the 28/02/2020 at 13:09hrs, a black Ford Fiesta was stopped on the A361 near to Derry Hill, Calne.

The vehicle was searched and the driver has been found to be in possession of cannabis. A drugs swipe test was also conducted on the driver which tested positive. The 18 yr old driver from Trowbridge was arrest on suspicion of driving whilst unfit through drink or drugs.

Criminal Damage.

On the 02/03/2020 between 08:10hrs and 16:30hrs in London Road, Calne.

Unknown suspect(s) have damaged a wooden door of a detached garage. Access does not appear to have been gained to the garage.

Burglary.

On the 02/03/2020 between 20:02hrs and 20:30hrs in Norley Lane, Studley, Calne.

Unknown suspect(s) have jumped over a fence at the location, and have attempted to remove a doorbell video camera causing damage.

Burglary.

On the 02/03/2020 between 21:09hrs in Norley Lane, Studley, Calne.

Unknown suspect(s) have gained entry to a property by smashing a window. An untidy search has occurred, it is unknown if anything has been taken at this stage.

Burglary.

On 02/03/2020 at 19:34hrs in Maud Heaths Causeway, East Tytherton, Calne.

Unknown suspect(s) have gained entry to the building by smashing a window. An untidy search has occurred, it is unknown if anything has been taken at this stage.

WILTSHIRE POLICE

CPT Calne Area Briefing

Calne Area Community Policing



Proud to serve and protect our communities

February/March 2020

YOUR CPT – Calne Area

Inspector James Brain

Sergeant Richard Marshall

Sergeant Ho Tsang

Neighbourhood PCs and PCSO's

PC Steve Carroll (Calne Town and Calne Rural)

PCSO Cook (Calne Town)

PCSO Sheppard (Calne Rural)

PCSO Osbourne (Calne Rural)

- Info on who are the local policing team and geographical area they cover
- Any upcoming surgeries or meetings planned

You can find out more about Chippenham Area CPT, including news stories and contacts for local officers, on our website:

<https://www.wiltshire.police.uk/article/5421/Local-Officers-for-Chippenham-Area-CPT>

WILTSHIRE POLICE

CPT Calne Area Briefing

Calne Area Community Policing



Proud to serve and protect our communities

February/March 2020

LOCAL PRIORITIES

PRIORITIES FOR WILTSHIRE WEST CPT	UPDATE
Priority 1:	
<p>Drug dealing in Calne</p> <p>Reports of drug dealing in the locality of Calne.</p> <p>Community policing teams patrolling the known areas of drug dealing and taking positive action, i.e. stop search and warrants.</p>	<p>A vehicle was stopped in the locality and as a result of this three addresses, two in Calne were searched and over £20,000 of crack was located and seized, also a large amount of cash was seized.</p> <p>Four people were arrested and addresses have been identified to work with the vulnerable persons involved.</p>
Priority 2:	
<p>Community Speed Watch North Wiltshire</p>	<p>Speeding drivers in North Wiltshire</p> <p>Community Speed Watch Teams will be monitoring roads in and around North Wiltshire</p>
Priority 3:	
Priority 4:	

WILTSHIRE POLICE

CPT Calne Area Briefing

Calne Area Community Policing



Proud to serve and protect our communities

February/March 2020

HIGH LEVEL PCC UPDATES

- **Burglary reports** - Recent media reports have claimed that burglary is 'no longer a priority' for Wiltshire Police. It's unfair to suggest this is the case when so many improvements have been seen in the way they investigate burglaries. That said I recognise more improvements need to be made in how they initially investigate these crimes and work is being done at the top level to ensure this is happening. Also, the increase we are now seeing in the number of staff and officers here, following years of government underfunding, will also help improve our service.
- **Estates update summary** - As part of my Estates Strategy 2017 - 21 I am keen to improve the spaces we have to give our officers and staff premises to enable them to meet the demands of their roles that also improve their general health and wellbeing.

Every pound we save on running our estate is a pound I will not have to save from policing. Buildings don't keep people safe, visible officers out in our communities that are able to respond quickly do.

Several touchdown points have now successfully gone live, in Calne and Pewsey Leisure Centres and Downton, Wilton, Malmesbury and Westbury Libraries. These touchdown points replace out-of-date and underused police buildings which weren't open to the public. This saves us valuable funds but also encourages officers out into our communities making them more visible and accessible.

Royal Wootton Bassett improvements are progressing currently due for completion in April 2020. Improvements at the new site in Warminster will begin in April 2020, due for completion at the end of the summer. Refurbishment plans of Bourne Hill in Salisbury to a modern, open plan environment across a single floor have been submitted and if approved, are likely to commence in the second half of 2020.

HIGH LEVEL FORCE UPDATES

- **Operation Makesafe** - We're working with hotels and B&Bs across the county to highlight child exploitation and the risk of their premises being used for criminal activity. Training will run 17/18/19 March and PCSOs have been visiting establishments to invite

WILTSHIRE POLICE

CPT Calne Area Briefing

Calne Area Community Policing



Proud to serve and protect our communities

February/March 2020

managers in person. [More information available on our website.](#)

- **Don't dial and drive** - We will be supporting the National Police Chiefs' Council campaign to tackle drivers who use their mobile phones whilst behind the wheel during March.
New legislation that came into effect on 1 March 2017 meant drivers caught using their mobile phone when driving will receive six points on their driving license and a £200 fine. We want everyone to be safe on our roads and as part of the campaign we will be educating the public that the true cost of taking such a risk can sadly be far more tragic than points and a fine.

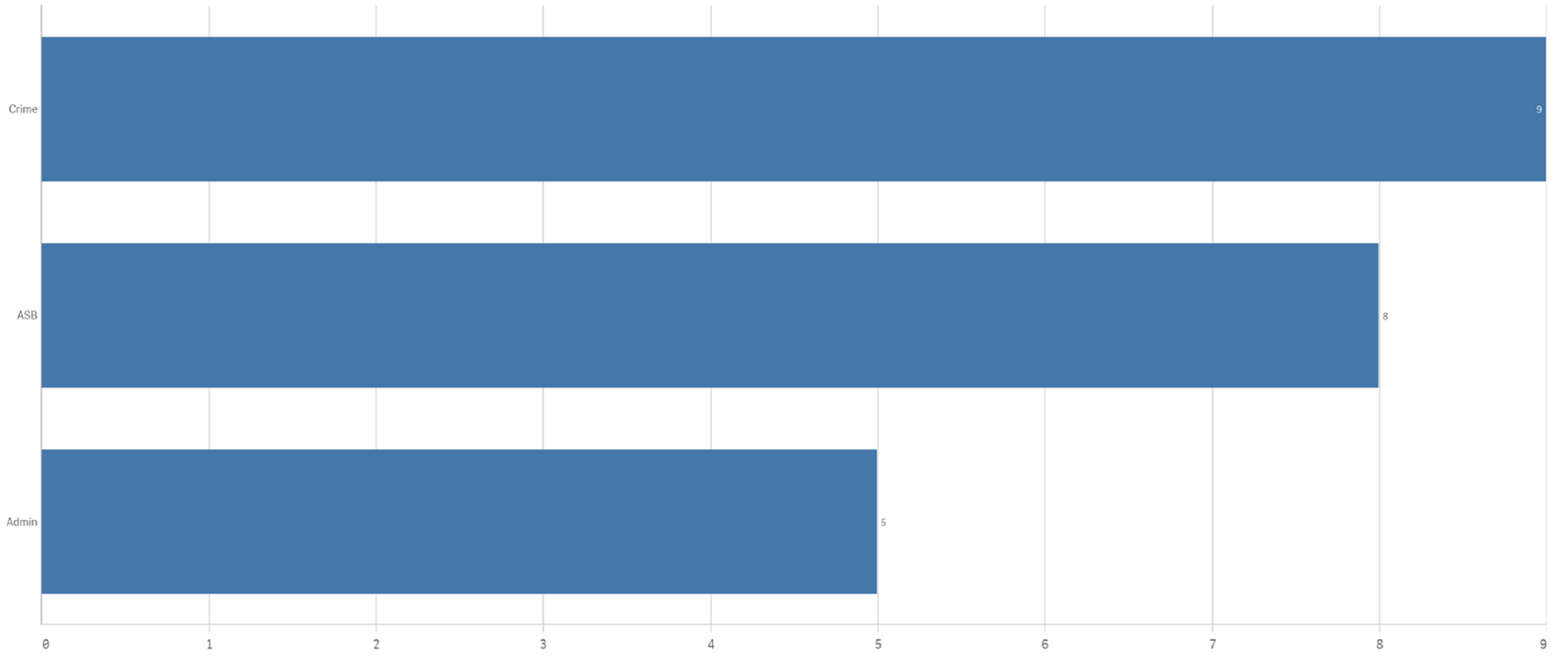
GET INVOLVED

- You can keep up to date with the latest news in your area by signing up to our Community Messaging service – www.wiltsmessaging.co.uk
- You can follow your CPT on social media <https://www.wiltshire.police.uk/Followus>
- More information on your CPT area can be found here: www.wiltshire.police.uk and here www.wiltshire-pcc.gov.uk

FEEDBACK/ACTIONS TAKEN

Number of Incidents by Incident Group

Click bar to drill down





DORSET & WILTSHIRE FIRE & RESCUE SERVICE

WILTSHIRE AREA BOARD REPORT

Community Safety Plan

DWFRS Community Safety Plan can be found on the DWFRS website;
<http://www.dwfire.org.uk/community-safety-plan/>

Prevention

We are committed to making a real difference to the lives of people in Dorset and Wiltshire. Our aim is to reduce the level of risk and harm to our communities from fire, targeting those most at risk. We do this primarily through our Safe and Well visits.

A Safe and Well visit is **FREE** and normally lasts about one hour covering topics such as:

- Using electricity safely
- Cooking safely
- Making an escape plan
- What to do if there is a fire
- Keeping children safe
- Good practice – night time routine and other points relevant to you
- Identifying and discussing any further support the occupier may need

Are you or anyone you know:-

- Over the age of 65?
- Need a smoke detector?
- Have a long-term health condition?
- Suffer from poor hearing or sight loss?
- Would you struggle to escape in the event of a fire?

If you can answer yes to more than one of these questions, then please call us on 0800 038 2323 or visit <https://www.dwfire.org.uk/safety/safe-and-well-visits/>



Protection

On-going interaction by Protection Team members with Local Authorities, Private landlords and tenants regarding fire safety-related matters: external cladding systems; fire detection and warning systems; fire resisting doors (& self-closers); combustibility/fire resistance of construction materials; commercial and residential sprinklers systems and water-mist suppression systems

General Enquiries

If you have a general fire safety enquiry regarding commercial property, please email fire.safety@dwfire.org.uk and the Fire Safety Team will respond in office hours.

Fire Safety Complaint

If you wish to tell us about fire safety risks in commercial premises, such as locked or blocked fire exits, you have three options:

- You can email the fire safety department at enforcement@dwfire.org.uk
- Call 01722 69 1717 during office hours (9am-5pm).
- Call our Service Control Centre on 0306 799 0019 out of office hours (5pm-9am)

On Call Recruitment

Have you always wondered if you could join the fire service, but haven't had the opportunity to find out more? Have you found yourself seeking your next challenge, keen to give back to the local community or wanting to learn new skills including leadership and teamwork? Then becoming an on-call firefighter is for you.

As a paid position, on-call firefighters commit anywhere between 40 to 120 hours per week, during which time they must be able to respond to the station immediately.

Many have 'normal' jobs during the day, then upon their return home make themselves available overnight or during the weekends. Some of our crew respond from their workplaces during the day, and we are very grateful to their employers for releasing them to perform their vital duties.

Anyone over 18 years old can apply (although you can also apply once you are 17½) you must be able to respond and attend the fire station within 5-8 minutes, you have a good standard of physical fitness (i.e. you are generally active), and you must have the right to work in the UK.

Further information on becoming an On Call Firefighter can be found at www.dwfire.org.uk/working-for-us/on-call-firefighters/ or should you have any questions, you can call **01722 691444**.



Recent News & Events

How many smoke alarms do you have?



Dorset & Wiltshire Fire and Rescue Service as part of the Fire Kills campaign is asking people to make sure they fit smoke alarms on every level of their home and to test them regularly.

For further information please visit the websites below:-

<https://www.dwfire.org.uk/safety/safety-at-home/smoke-alarms/>

<https://firekills.campaign.gov.uk/>

Response

Total Incidents attended by DWFRS for Chippenham, Corsham, Calne & Malmesbury:

DWFRS have responded to a number of incidents in since the last report and the tables below provide a breakdown of these, by station, for the period 1st January 2020 until 29th February 2020.

Incidents of note

At 19:22hrs on 27th February 2020, Dorset and Wiltshire Fire Control mobilised fire crews from Chippenham Fire Station to reports of a property fire in Eastern Avenue, Chippenham. Whilst still on route, Fire Control took multiple calls to the property stating that the property was involved in fire and therefore the decision was made to add an additional fire engine from Corsham Fire Station. Once the first crews from Chippenham were in attendance, they requested for further resources to deal with the fire, with the total number of pumps reaching 9, as well as special support resources including a command support unit, water carrier, British Red Cross vehicle and operational support unit. The crews used 2 breathing apparatus sets, 4 main jets, 2 high-pressure hose reel jets and other equipment to extinguish the fire.

Demand

Chippenham Fire Station P1 & P2 Appliance

Category	Total Incidents
No. of False Alarms	31
No. of Fires	13
No. of Road Traffic Collisions and other Emergencies	23



Total	67
--------------	----

Corsham Fire Station P1 & P2 Appliance

Category	Total Incidents
No. of False Alarms	9
No. of Fires	6
No. of Road Traffic Collisions and other Emergencies	3
Total	18

Calne Fire Station P1 Appliance

Category	Total Incidents
No. of False Alarms	12
No. of Fires	5
No. of Road Traffic Collisions and other Emergencies	12
Total	29

Malmesbury Fire Station P1 Appliance

Category	Total Incidents
No. of False Alarms	7
No. of Fires	6
No. of Road Traffic Collisions, other Emergencies and Stand by's	15
Total	28

Darren Nixon

Station Manager, North West Wiltshire (Chippenham, Corsham, Calne & Malmesbury)

Email: Darren.Nixon@dwfire.org.uk

Tel: 07860 345294

www.dwfire.org.uk

March 2020

The right healthcare, for you, with you, near you

NHS Wiltshire Clinical Commissioning Group (CCG) is responsible for commissioning a broad range of healthcare for the population of Wiltshire. We are led by experienced local GPs drawn from across the county, who provide clear clinical leadership to the big decisions affecting the future of healthcare provision in Wiltshire, carefully tailored to meet the differing needs of people locally.

Our vision is to ensure the provision of a health service which is high quality, effective, clinically-led and local. We are committed to delivering healthcare that meets the needs of Wiltshire people, to consult and engage with our population to enable them to be involved in decisions made about health services and to deliver those services to people in their own homes or as close to home as possible.

This is our last update as Wiltshire CCG but we will continue to provide updates and engage with Area Boards as Bath and North East Somerset, Swindon and Wiltshire CCG.

News

BSW CCGs merger – new Governing Body appointments

Following the recent election of Dr Andrew Girdher as Clinical Chair for the merged BSW CCG, a number of appointments have been made, both through votes from members and through Governing Body appointments, to strengthen our leadership team.

Medical Director

Dr Ruth Grabham has been appointed as Medical Director for BSW CCG, starting 1 March 2020. Ruth has been Medical Director for BaNES CCG for seven years and spent 25 years working as a GP partner in our local area.

As a key part of her new role, Ruth will work to bring clinicians and colleagues together across BSW, deliver benefits for patient care by championing the clinical voice and helping to develop cross system integrated care.

Locality Clinical Chairs

Two of the three Locality Clinical Chairs have been appointed following a GP member vote. They will ensure there is strong clinical representation on BSW CCG's Governing Body and will take up their positions on 1 April 2020.

Dr Bryn Bird has been elected as Locality Clinical Chair for BaNES. Bryn is a local GP and has been a member of the BaNES CCG Governing Body for the past 18 months.

Dr Amanda Webb will take up the position for Swindon. Amanda is a GP based at Westrop Medical Practice and has been a member of the Swindon CCG Governing Body for the past year.

The Wiltshire role is yet to be appointed and work is continuing to fill the post.

Locality GPs

GP members also took part in an election for Locality GPs for BaNES, Swindon and Wiltshire. Locality GPs will act as a link between Primary Care, our Primary Care Networks and BSW CCG's Governing Body. They will all take up their positions on 1 April 2020.

Dr Tim Sephton will take up the role of Locality GP for BaNES. Tim is a GP Partner at the Chew Medical Practice in Chew Stoke and is currently a member of the BaNES CCG Governing Body.

Locality GP for Swindon is Dr Francis Campbell. Francis is a GP at the Elm Tree Surgery in Shrivenham and currently GP Representative on the Swindon CCG Governing Body.

Wiltshire has three appointments in recognition of our relative size compared to BaNES and Swindon.

Dr Sam Dominey, a GP from the Three Chequers Medical Practice in Salisbury, will represent practices in the south; Dr Nick Ware, a GP Partner from Northlands Surgery in Calne will represent practices in the north; and Dr Catrinel Wright, a GP Partner from Lovemead Group practice in Trowbridge and current GP Chair for West Wiltshire will represent the west part of Wiltshire.

We are still in the process of recruiting for a number of other roles on the BSW Governing Body and will keep you up to date with these appointments once they are finalised.

Coronavirus (COVID19) update

Nationally, the NHS and Public Health England (PHE) are extremely well prepared for outbreaks of new infectious diseases.

Locally, we are working extensively with our partners and providers in Wiltshire and across B&NES and Swindon to ensure the safety of our patients and colleagues while also ensuring services are available to the public as normal.

Testing of suspected coronavirus cases is carried out in line with strict regulations. This means that suspected cases are kept in isolation, away from public areas. Any equipment that comes into contact with suspected cases is thoroughly cleaned as appropriate. Specific guidance has also been shared with NHS staff to help safeguard them and others. Members of the public can be reassured that their safety is a top priority, and we encourage them to attend all appointments as usual.

Everyone is being reminded to follow Public Health England advice to:

- Always carry tissues with you and use them to catch your cough or sneeze. Then bin the tissue, and wash your hands, or use a sanitiser gel.
- Wash your hands often with soap and water, especially after using public transport. Use a sanitiser gel if soap and water are not available.
- Avoid touching your eyes, nose and mouth with unwashed hands.
- Avoid close contact with people who are unwell.

More information can be found here: gov.uk/coronavirus

Changes to Wiltshire's early mental health and counselling support service

Wiltshire Council and Wiltshire CCG have recently changed how children and young people are supported earlier to prevent escalation of mental health disorders.

The new service provider is Barnardo's which will offer access to the new service through www.onyourmind.org.uk, as well as aligning closely with the single point of access to Oxford Health's Child and Adolescent Mental Health Service (CAMHS).

From 1 April 2020 the new service will offer five to 18-year olds in Wiltshire:

- Information, advice and guidance
- Online and face-to-face counselling
- Navigation to positive activities in the community/social inclusion.

The service will also deliver information, advice and support to parents and carers who are concerned about their child's mental health and wellbeing.

For further information you can email Barnardo's – info.wiltsemh@barnardos.org.uk.

Our Health Our Future panel

Recruitment continues for panel members to join the Our Health Our Future panel – a new way of engaging with the public from B&NES, Swindon and Wiltshire to get their views of health and care issues.

After four weeks of recruitment activity we have signed up around 400 panel members, well on the way to our target of 1000 members.

The recruitment team have been in some of the larger population areas of B&NES, Swindon and Wiltshire including Salisbury, Trowbridge, Chippenham, Warminster, Devizes, and various locations in Bath and Swindon.

The Our Health Our Future Panel is an online panel made up of a representative sample of the population from across our region. Panel members will take part in regular surveys throughout the year as well as form focus groups from time to time. The option of hard copy surveys and telephone interviews will be offered to people who are not able to access the survey online. Full reports of every survey will be publicly available and insights gained from the panel will be used to inform our decision making, strategy, service design and service change.

We are keeping the Get Involved section of our website up to date with details of recruitment activity – visit www.wiltshireccg.nhs.uk for locations, dates and times. There is also a link for people who can't get to a recruitment session to sign up online and complete the first survey.

If you would like to know more about the Our Health Our Future Panel, please get in touch with the communications team communications.wiltshireccg@nhs.net

International Year of the Nurse and Midwife 2020

2020 is Florence Nightingale's bicentennial year, designated by World Health Organisation as the first ever global Year of the Nurse and Midwife. Nurses and midwives make up the largest numbers of the NHS workforce. They are highly skilled, multi-faceted professionals from a host of backgrounds that represent our diverse communities.

This year is our time to reflect on these skills, the commitment and expert clinical care they bring, and the impact they make on the lives of so many. It is also an opportunity to say thank you to the professions; to showcase their diverse talents and expertise; and to promote nursing and midwifery as careers with a great deal to offer.

We will keep you updated on activities to celebrate the International Year of the Nurse and Midwife across the region.

BSW CCG online

As we head towards the merger with Bath and North East Somerset CCG and Swindon CCG on 1 April 2020, we are consolidating our online presence.

Our Twitter accounts have already merged – you can follow us @NHSBSWCCG

Our Facebook account is now @NHSBSWCCG

We are on LinkedIn as NHS BSW Clinical Commissioning Group

Our Instagram account is NHS BSW CCG

And by 1 April 2020 we will have a new website in place – more information to follow.

Governing Body meeting

Our next, and last Wiltshire CCG Governing Body meeting will be Thursday 26 March 2020 at 1.30pm at Southgate House, Pans Lane, Devizes.

The next BaNES, Swindon and Wiltshire (BSW) Governing Bodies in common meeting is on Thursday 19 March 2020 at St Johns Parish Centre, 2 Wingfield Road, Trowbridge, BA14 9EA starting at 10am.

You can read the papers from previous meetings on our website www.wiltshireccg.nhs.uk/governance/governing-body-meetings-in-public

News archive

Read more news from Wiltshire CCG in our [news archive](http://www.wiltshireccg.nhs.uk/news/news-archive) – www.wiltshireccg.nhs.uk/news/news-archive.

Keep up to date with news and information from Wiltshire CCG on social media.



NHSBSWCCG



@NHSBSWCCG

Survey seeks views on council's adult social care advice team

Healthwatch Wiltshire is asking for the views and experiences of people who have been in touch with Wiltshire Council to get help and support with social care.

Wiltshire Council provides support and information on adult social care services through a helpdesk called the Advice and Contact Service, which was set up in April 2018.

Any adult living in Wiltshire or thinking about moving to the area, including family and friends, can contact the team to find out how social care and other services could help.

The survey will look at how well this new service is working and identify any areas that could be improved.

Stacey Sims, Healthwatch Wiltshire Manager, said: "People have told us that they struggle to find the information they need around adult social care and that carers and people who pay for their own care find this especially difficult.

"Because of this feedback and the development of the new Advice and Contact team, we would like to hear from anyone who has used the service to share their experiences with us.

"Your feedback will then be shared with the team and their commissioners so they can understand what's going well and where improvements can be made."

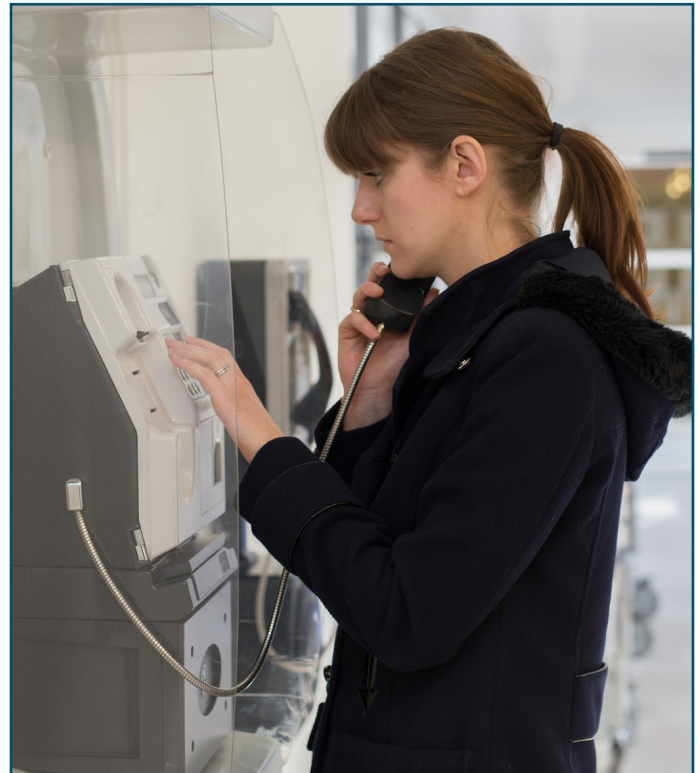
How you can get involved

Two versions of the survey are available online, All feedback is anonymous.

01225 434218

info@healthwatchwiltshire.co.uk

www.healthwatchwiltshire.co.uk



and can be completed depending on how you accessed the Advice and Contact Service.

If you contacted the team by telephone, go to www.smartsurvey.co.uk/s/adviceandcontacttelephone

If you contacted the team by email, go to www.smartsurvey.co.uk/s/adviceandcontactemail

If you prefer, you can have a chat about your experiences with a member of the Healthwatch Wiltshire team, either on the phone or in your own home, please call us on 01225 434218 or email us at info@healthwatchwiltshire.co.uk to arrange.

Agenda Item 8

Calne Community Safety Forum

Draft minutes of meeting Wednesday 15th January 2020

1. Apologies:- Frank Rumble, Kevin O'Daly (Calne BR Royal British Legion), Katie Brown (Local Area Coordinator) Alexa Davies, Matt Perrott, Craig Player, Jonathan Stiddard, Diane Gooch (Dementia Action Champion Alliance), Mark Edwards (CTC)

Attendees:- Cllr Glenis Ansell (CCSF Chair), Tamzyn Long (CCSF Secretary), Roger Appleby (Resident), Mike Brandwood (Neighborhood Watch), Shirley Harper-ONEill, David Evans (Cherhill Parish Council for introducing Neighbourhood Watch in Cherhill), Cllr Ross Henning, Steve Carroll (Police), Mark Cook (Police), Howard Marshall (Town Council), Maggie Mitchell (Calne Lions), Karen Boswell (CARP), Kim Street (Community and Business Support Officer, CTC), Gordon Alexander (RBL & CCTV), Garry Jones (Community First Responders)

2. Minutes of the last meeting held 15th January 2020 as circulated

Minutes of the meeting held on 15th January 2020 were noted.

3. Matters Arising/Updates

“Safe Places”:

Presentation is ready to take to the Town Council and Area Board for the relaunch of Safe Places. Re-state all the Safe Places within the town.

Lorrywatch

In progress, awaiting our slot!

Hedges and verges

- 105 North Street. Hedge is in desperate need of cutting back, its blocking the path, making it dangerous for pedestrians, especially people in wheelchairs.
- Brook Way and Wessex Close, hedge need cutting back cannot see the street signs.
- Karen advised we all need to use the Wiltshire App to report problems.
- Ross commented could the Parish steward help?
- Glenis to report to Council.
- Shirley commented the new street calming that has been put in at the bottom of Victoria Terrace is great, but people keep parking on the double yellow lines which causes problems.

CCTV

Welcome to Gordon, The new CCTV Manager.

- See attached Report from Gordon.
- They have 26 volunteers and footage is saved for 28 days.
- Need to get more shops onboard with ‘Shop Watch’, Need to launch an initiative.
- Do a flyer to advertise. Police will deliver and Gordon will train up.

Footpath

Roger updated on various points.

- More meetings are required to finalise position of the footpath.
- It is a very important issue to ensure safety for the school children
- Ross will chase next time he is in County Hall
- Money is reserved for the project.
- Pressure needs to be applied.
- Possibly contact the press.

4. Emergency Services

Ambulance and Calne First Responders

Update from Garry Jones

- They were very busy over the Christmas period.
- They had to help support Melksham and Chippenham as they don't have a 24hr service
- They are only supposed to respond to Cat 3 and 4 calls but were called out to Cat 1 and 2 calls over the busy period
- Police thanked Garry for helping a man who had a stroke.
- They were called to a lady who had fallen from her wheelchair in town.
- Karen mentioned that the Council should regularly post up dates of where the defibs are placed around the town.
- Also if you call 999 the emergency services will let you know where the defibs are.

Calne Fire station

- No update.

Calne Police Area

Update from Steve Carroll and Mark Cook

- There has been lots going on, very busy over the Christmas period.
- Ongoing case concerning Class A drugs.
- Arrested a male driving at speed, also for drink and drugs, has been released under investigation.
- Bognor House, has been involved 'Cuckooing' (where drug dealers take over the homes of vulnerable people in exchange for free drugs.) £1000 drugs were found. Closure order has been put in place.
- Theives stole bikes worth £800 from Manor Farm, ongoing investigation.
- 2 Men arrested in Abberd Way, suspicious car, they were drug swiped, arrested for drink and drugs, Vehicle searched, over £1000 drugs were found.
- Repeat offenders, bank accounts can be frozen.
- Castlefields - Three homeless people have been living there.
- Police are patrolling the area.
- They urge everyone to report any suspicious behavior, recording number plates, youths etc.

Everyone at the meeting agreed that the Police need premises where it is private.

Ross commented that at the Police and Crime Panel, the point of premises will be made.

Street Pastors

- In progress

5. Neighborhood Watch

Update form Mike Brandwood

- Everyone needs to join Town Watch. Only 3 members.
- In the process of doing a Self Assessment
- Still pushing community messaging.
- David Evans invited Mike to their first NW meeting in Cherhill
- NW next meeting 19th March 7.45pm, Colmans Farm

Response to previous question from Maggie regarding the Abberd Brook Flooding- Minutes dated Wednesday 20th November 2019

Response from Mark Edwards, Head of Business, Calne Town Council

"I have just discussed with our construction team and groundworks contractor who have confirmed we currently only have one pump on site which is only being used to dewater the excavation around the construction of the new culvert across the Abberd Brook. - This pump was used very briefly this morning to remove the rainfall that fell over the weekend to enable works to continue within the excavation area.

All works associated to the attenuation ponds are now complete in line with the approved SW strategy and flowing as proposed. There is therefore no need for us to pump out excess water from the pond. "

6. CIL, S106 and Calne Community Area Board matters

- No update

7. Highways - condition of roads and pavements

- Heron Close pavements are in bad state.
- Finamore Gardens, drains and paths in bad state.
- Maggie mentioned the yellow lines down Abberd Way need redoing. Police say they will all be done around town at the same time. Other areas are in need too.
- London Road Drain is bad.
- Matt Perrott to look into all the roads.
- Ross urges people to use the My Wiltshire App to report. Once it is reported it has to be fixed.

Responses to previous questions - Issue of the New development at Derry Hill/ Studley - Studley Cross Roads - Minutes dated Wednesday 20th November 2019

Response, Mark Stansby Senior Traffic Engineer, Highways to Cllr Ross Henning. I am sorry for the delay with this update.

As I previously stated, whilst I am assigned as the Traffic Officer for the Calne CATG, this role does not cover direct involvement with Developer-lead schemes which are handled by our Highways Development Control (HDC) team. I have made enquiries with them about this and also discussed matters with my immediate colleagues.

Notwithstanding the development of the garden centre site, there has been little change directly affecting the A4 route. The location remains rural in nature with no additional vehicular accesses being introduced onto the A4 and all of the new

properties set back from the highway behind an established boundary fence, with sight-lines maintained to the required standard.

The setting of speed limits is covered by the Department for Transport Circular 01/13 and Section 7 covers Rural Speed Management. This length of the A4 is considered to be part of a high quality strategic road which once formed part of the national Trunk Road Network. In 2009, as part of a County-wide review of speed limits on all A and B class roads, the mean speed recorded for this section was 57 mph and no changes to the speed limit were recommended. The Circular discusses the importance of setting speed limits appropriate for the conditions in order to achieve good compliance. Essentially, the criteria for a 40 mph limit is not met here due to a lack of frontage development and access points.

The decision to pursue a 50 mph limit to accommodate the provision of a signal controlled crossing was viewed as a good compromise by HDC and this should help to regulate speeds along this length. Other safety features have also been provided including street lighting along the main carriageway, new footways and additional warning signs.

An independent Stage Three (as built) Safety Audit has been undertaken and a draft report has been produced, (copy attached). The report makes no mention of the new speed limit. I am informed by HDC that the issues raised in the report are being addressed by the Developer and progress of this will be monitored.

David Evans, comments from previous meeting.

- London Road, rain water drains are very deep and can cause damage to car tyres.
- He has reported to Wiltshire Council as his car was damaged.

*Response from, Matthew Perrott. Highway Engineer
Wiltshire Council Local Highways team have visited the site on numerous times to undertake repairs however 1 gully is still outstanding, due to park vehicles causing an obstruction and repairs are unable to be undertaken. I am meeting the contractor later this week to take this issue forward.*

8. Next meeting – Wednesday 18th March, Harris Room, Calne Library 9.30am

9. Dates of meeting for 2020

20th May 2020

15th July 2020

16th September 2020

18th November 2020

Harris Room, Calne Library 9.30am

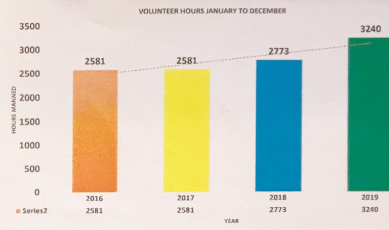
10. Other Business

Things that were discussed at the end

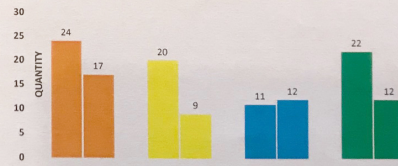
- Mens Shed are being evicted. They are in the process of moving but have no premises as yet!
- The new Youth Club that is starting up!
- Town Council are securing all green space in Calne.
- Old Dixons building becoming the Art Centre.
- Karen mentioned a problem with youths in King Edward Close. Anti Social Behavior, Youths on scooters playing chicken with cars, very dangerous. Police are monitoring it and speaking to parents, police mentioned using mobile camera.
- Karen thanked the companies that have been dropping off wood chip to Castlefields for the new path.
- We should have pot hole of the month, post to the app. Homework.
- Code for the toilet in the library 1958

STATISTICS FOR CCTV FOR YEAR 2019

YEAR	2016	2017	2018	2019	%INCREASE
HOURS MANNED	2581	2581	2773	3240	17%
NUMBER VOLUNTEERS	21	21	24	26	8.33%
AVERAGE HOURS PVA	122.90	122.90	115.54	124.62	7.85%
DISCS BURNT	24	20	11	22	100.00%
STILLS	17	9	12	12	0.00%



FOOTAGE/STILLS REQUESTED



Report to	Calne Area Board
Date of Meeting	10/03/2020
Title of Report	Community Area Grant funding

Purpose of the report:

To consider the applications for funding listed below

Applicant	Amount requested
Applicant: Waste Not Want Not Project Title: New IT Equipment View full application #3681	£798.75
Applicant: Humpty Dumpty Nursery Project Title: Early Years Garden Project View full application #3329	£3500.00
Applicant: Calne in Tune Project Title: Equipment for Calne Central Community Centre. View full application #3716	£4938.00
Applicant: Cherhill Parish Council Project Title: Yatesbury Village Notice Board View full application #3646	£500.00

1. Background

Area Boards have authority to approve Area Grants under powers delegated to them. Under the Scheme of Delegation Area Boards must adhere to the [Area Board Grants Guidance](#)

[The funding criteria and application forms](#) are available on the council's website.

2. Main Considerations

2.1. Councillors will need to be satisfied that funding awarded in the 2015/2016 year is made to projects that can realistically proceed within a year of it being awarded.

2.2. Councillors must ensure that the distribution of funding is in accordance with the Scheme of Delegation to Area Boards.

2.3. Councillors will need to be satisfied that the applications meet the Community Area Board grants criteria.

[Type here]

3. Environmental & Community Implications

Grant Funding will contribute to the continuance and/or improvement of cultural, social and community activity and wellbeing in the community area, the extent of which will be dependent upon the individual project.

4. Financial Implications

Financial provision had been made to cover this expenditure.

5. Legal Implications

There are no specific legal implications related to this report.

6. Human Resources Implications

There are no specific human resources implications related to this report.

7. Equality and Inclusion Implications

Community Area Boards must fully consider the equality impacts of their decisions in order to meet the Council's Public Sector Equality Duty.

Community Area Grants will give local community and voluntary groups, Town and Parish Council's equal opportunity to receive funding towards community based projects and schemes, where they meet the funding criteria.

8. Safeguarding Implications

The Area Board has ensured that the necessary policies and procedures are in place to safeguard children, young people and vulnerable adults.

9. Applications for consideration

Application ID	Applicant	Project Proposal	Requested
3681	Waste Not Want Not	New IT Equipment	£798.75
Project Description: New PCs and software to improve organisation and communication of the organisation and its aims and objectives.			
Input from Community Engagement Manager: Waste Not Want Not (WNWN) is a non-profit making registered charity that was set up in 2002 to provide affordable recycled/reconditioned household items for some of the most vulnerable people in our community to create homes. These people often include refugees, those with mental health issues and those escaping domestic abuse. The organisation has helped over 60,000 people since they first opened their doors and, in addition recycle approximately 75 metric tonnes of reusable items per year, which would otherwise have ended up in landfill and also provide opportunities for around 35 volunteers to build confidence, gain life skills and work experience. WNWN is based in Chippenham but provides a valuable service across North Wiltshire and particularly Chippenham, Calne and Corsham. The organisation is also approaching			

[Type here]

Chippenham and Corsham Area Boards with regards to supporting other, separate projects in the next few months.

WNWN has undertaken a 10-year review of their operational equipment and property. This review has highlighted that their IT equipment is outdated and unsuitable for current social media use that will help them to stay relevant and maintain a presence in the community.

This application meets funding criteria and Calne Area Board priorities especially with regards to Mental and Emotional Health in Adults; Children and Young People; Diversity and Social Inclusion; Training and Skills.

If members choose to award a community area grant to this project, it will represent the total project cost.

Proposal

That the Area Board determines the application.

Application ID	Applicant	Project Proposal	Requested
3329	Humpty Dumpty Nursery	Early Years Garden Project	£3500.00

Project Description:

The development of outdoor space at the nursery to create an inviting and engaging garden space for children to learn in throughout the whole year.

Input from Community Engagement Manager:

The Humpty Dumpty Nursery is a part of the YMCA Bath group.

Mostly known for its original emphasis on helping young people in need to build a positive future and focussing on homelessness and unemployment, the modern YMCA has also adapted to their changing needs, including a focus on young families.

The Calne Humpty Dumpty Nursery is one of 9 Ofsted registered nurseries run by the YMCA in the South West, 8 of these are located in the Wiltshire Council area.

The nursery is registered to take 36 children aged 3months – 5 years and is set in the grounds of Kingsbury Green Academy. Children who attend the nursery currently include looked after children, refugees, children with additional needs and children from supported families.

This project will see the development of existing outside spaces to provide more all-weather/child friendly artificial grass areas; vegetable boxes to encourage an interest in growing and eating fresh/healthy produce; a large sand pit and a climbing area to help develop motor skills and communication spaces.

The project can be seen to link to Calne Area Board priorities, particularly Diversity and Social Inclusion, Active and Healthy Lifestyles and Mental and Emotional Health.

The applicant has already identified support from local and regional funders to cover almost half of the total cost of the project and, if the requested grant was awarded it would represent another 50%. It should be noted that the financial statement shows an overall shortfall of £250. Members may be minded to consider making any offer conditional upon the confirmation of all costs.

[Type here]

Proposal
That the Area Board determines the application.

Application ID	Applicant	Project Proposal	Requested
3533	Calne in Tune	Equipment for Calne Central Community Centre.	£4938.00

Project Description:
The Calne in Tune Community Centre aims to provide a venue for local people to experience and enjoy cultural and artistic activities. Sometimes as part of an audience but also more importantly through taking part. This project will enable us to provide facilities for everyone in the community to engage in Music, Arts, Crafts, Drama, Media and Recreational activities. We want to enable the collaborative involvement of Local Councils, Charities, Voluntary Groups and local experts in skills sharing and developing everyone's talent. A grant from the Area Board will also enable us to provide internet at the venue.

Input from Community Engagement Manager:
Calne in Tune has been actively developing a project to advance the arts in the wider Calne community for several years. The group aims to encourage everyone to engage more with music, drama, art, craft, performance etc both as an audience but also through learning new skills, gaining confidence and 'having a go'.

The group is particularly keen to encourage those local people who are least likely to have, or feel welcome to take, opportunities to engage in the arts and to develop collaborative working so that people who are skilled in the arts can share their skills and encourage others to explore the broad health and wellbeing benefits that can be achieved through engaging in art of all kinds.

With the identification of a venue for the project in the centre of Calne, the group is now looking to secure revenue costs for the future and to provide IT, audio and multi-media/performance equipment that will enhance experiences for local people. A list of that equipment has been provided and can be broken down into the following categories:

DJ system: £1600
Video/editing/dedicated computer equipment: £2215
Sound and video editing software: £680
Lighting: £406

If the Area Board awards the funding requested, it will enable the group to acquire these capital items and in addition will support the facilitation of internet on site and will represent 28% of the total project cost.

The group is developing an ongoing funding plan to identify further national and local funding and hopes to become more self-sustaining into the future through craft sales/refreshments/performances etc.

An award to this project can be linked to the Calne Area Board priorities relating to: Training and Skills, Mental and Emotional Health and Active/Healthy Lifestyles.

Proposal
That the Area Board determines the application.

[Type here]

Application ID	Applicant	Project Proposal	Requested
3646	Cherhill Parish Council	Yatesbury Village Notice Board	£500.00
<p>Project Description: There has been a Yatesbury Village Notice Board for more than 20 years but has now fallen apart. It is suggested that there are many, especially older people, who rely on getting news and Parish Council updates from the Notice Board</p> <p>Input from Community Engagement Manager: This is a relatively small request for a contribution towards the cost of installing a noticeboard in Yatesbury.</p> <p>The total cost of the project is £850.</p> <p>The application does not confirm who is providing the balance of funding required. It may be assumed that the remaining £350 will be allocated by the Parish Council.</p> <p>However, the Community Area Grant criteria states that Town and Parish Councils must demonstrate match funding for any application that is submitted, as they are able to raise funds through their precept/local taxation.</p> <p>Members may wish to ask the Cherhill Parish Council rep to clarify the contribution that is being allocated before making a decision.</p> <p>This application could be linked to the Calne Community Area Priority relating to Social isolation and loneliness.</p>			
<p>Proposal That the Area Board determines the application.</p>			

No unpublished documents have been relied upon in the preparation of this report

Report Author:

Jane Vaughan
Community Engagement Manager
01249 706447
Jane.Vaughan@wiltshire.gov.uk

Report to	Calne
Date of Meeting	10/03/2020
Title of Report	Community Youth Grants

1. Purpose of the report:

To ask Councillors to consider the following applications seeking funding from the Calne Area Board.

Application	Grant Amount	
Applicant: Calne Community Area Fairtrade Group Project Title: Fairtrade Fortnight 2020 Calne Library Event	£319.00	Approved under delegated authority
Applicant: Calne Town Council Project Title: Calne Youth Club pilot - joint Initiative	£806.40	
Applicant: Calne Pocket Park and Community Garden Project Title: Calne Pocket Park Youth Performance Skills Project	£2725.00	
Applicant: A Place 4 Us - Calne Disability Youth Club Project Title: A Place 4 Us Calne Disability Youth Club	£5000.00	
Total grant amount requested at this meeting	£8850.4	

2. Main Considerations

Councillors will need to be satisfied that grants awarded in the 2019/20 year are made to projects that can realistically proceed within a year of the award being made.

Area Boards have authority to approve Area Grants under powers delegated to them by the Cabinet member for Communities, Campuses, Area Boards, Leisure, Libraries and Flooding. Under the Scheme of Delegation Area Boards must adhere to the Area Board Grants Guidance 2019/2020.

Community Youth Grants will contribute to the continuance and/or improvement of cultural, social and community activity and wellbeing in the community area, the extent and specifics of which will be dependent upon the individual project.

Community Youth Grants give all local community and voluntary groups, Town and Parish Councils an equal opportunity to receive funding towards community based

projects and schemes.

3. The applications

<p>Applicant: Calne Community Area Fairtrade Group Project Title: Fairtrade Fortnight 2020 Calne Library Event</p>	<p>Amount Requested from Area Board: £319.00</p>	<p>Approved under delegated authority - in consultation with the Chair and Vice Chair.</p>
<p>This application meets grant criteria 2019/20.</p> <p>Project Summary: This is the major Fairtrade Event of the year in Calne. We have booked the entire library for the Event as 2019. We will be hosting a number of Fairtrade stalls The new to Calne A.C.T.S Theatre Arts Group short FT Films younger childrens activities and will run an Upcycling environmental Competition in Three Categories covering 1. 6-10years Collage 2. 11-16yrs upcycling 3a. 17-19yrs upcycling3b.20yrs upcycling . We require funding for event promotional materials and Competition Prizes for Cat 2 and 3a 17-19yrs of the competition.</p>		
<p>Applicant: Calne Town Council Project Title: Calne Youth Club pilot - joint Initiative</p>	<p>Amount Requested from Area Board: £806.40</p>	
<p>This application meets grant criteria 2019/20.</p> <p>Project Summary: Calne Youth Club. Following a joint youth engagement activity last autumn carried out by CMAS a demand was identified for a Youth Club. Recommendation from the report was that that we start thinking about the setup of a youth club as there seems to be a lot of interest from young people getting involved in session planning and choosing what they would like to do.</p>		
<p>Applicant: Calne Pocket Park and Community Garden Project Title: Calne Pocket Park Youth Performance Skills Project</p>	<p>Amount Requested from Area Board: £2725.00</p>	
<p>This application meets grant criteria 2019/20.</p> <p>Project Summary: A series of weekly workshops for young people following the May/June school exam period each workshop concentrating on a specific performance skill. To be followed by an intensive week of</p>		

preparation for performances in Calne Pocket Park drawing on the skills acquired during the workshops.

Applicant: A Place 4 Us - Calne Disability Youth Club

Project Title: A Place 4 Us Calne Disability Youth Club

Amount Requested from Area Board:
£5000.00

This application meets grant criteria 2019/20.

Project Summary: A Place 4 Us is a youth club for young people with Special Educational Needs and Disabilities SEND aged 13-25 based in Calne. We want to continue to offer young people of Calne the opportunity to attend this club and the extraordinary holistic benefits it provides. The club is currently able to welcome 15 young people and has a waiting list. A Place 4 Us runs for 2 hours once a week during half term only. The club is delivered by an experienced team of youth workers from Barnardos who provide a safe supported and young person centred youth club. The young people accessing the club are very mixed some are lively others are quiet we have wheelchair users and there are a few who have higher level support needs. Through regular attendance friendships have been made something a lot of the young people attending have not had the chance to do before. The promotion and development of social skills only form part of many things on offer at the clubs. The club increases young peoples physical and mental well being and delivers a programme of life skills. Regular participation reduces young peoples feeling of social isolation and creates a sense of belonging by actively being involved and seen in the community.

Report Author:

Ollie Phipps – Community Engagement Manager – Youth Lead Calne
Ollie.phipps@wiltshire.gov.uk

Share a Pot

Recommendation: to ringfence £4,000 of Health & Wellbeing funding for the continuation of the Share Pot Scheme

“We are only at week 6 of our Healthier Communities Seated Sport sessions at Colemans Farm and it will be week 3 of Share a Pot’s inclusion as partners on this project. The two concepts are managed separately with Healthier Communities long-term venture in Calne focused on the inclusion of adults and their involvement in sport and physical activity. Any Body Can Cook who have been granted funding from Calne’s area-board to join us have bolted-on to our existing standalone session, with their take on an idea which was developed originally in Singapore called ‘Share a Pot’.”

Each Friday starts with Any Body Can Cook who help participants prepare vegetables, demonstrating and explaining safe cooking techniques and general healthy eating principles. After 30 minutes, once all the ingredients are prepared, two of our coaches employed through Innov8; Josh and Lauren; take our Healthier Communities Seated Sports session for 1 hour while the soup is cooking. Our seated sport sessions vary each week but tend to involve target based sports such as Boccia, New Age Curling and more competitive games such as seated Hockey, Table Tennis and Volleyball. The Healthier Communities element is then followed again by Any Body Can Cook who serve up soup for lunch.

The sessions have steadily increased in participation week on week with our highest engagement coming week beginning 21 February with 7 participants. All of the participants are enjoying taking part in both the sports and the lunch element of this project with one participant Julie messaging the Healthier Communities page on Facebook saying, “I am enjoying myself each Friday lunch time doing my seated sports and have our homemade soup.”

With numbers increasing each week we foresee this project to be a major success in Calne and our engagement in the community will reflect this. Improved marketing will hope to attract greater number of participants to future events”.

Ashley Cornick
Healthier Communities Project Coordinator
Communities and Neighbourhoods

Wiltshire Council



“The “Share a Pot” sessions promote shared cooking and eating experiences.

Participants spend around half an hour preparing the soup and then take part in a seated exercise session while the soup cooks. There is half an hour at the end where they can sit together and share the soup they have made.

Both the preparation and eating time allows plenty of opportunity for social interaction and conversations to develop. Sitting and sharing what has been prepared is integral to most of our sessions as it promotes conversations and socialising and for some it is the only opportunity in the week, where they get to share a meal with someone else.

Share a pot started on the 14th February, and so far, we have had 6 attendees each week a combination of 3 men and 4 ladies.

They have arrived early each week, raring to get started with the chopping.

We discuss lots of different things and seem to enjoy chatting together about what is going on in the local community. As the weeks have progressed the group have started to share more about family, concerns and circumstances as they feel more comfortable.

The participants get involved in suggestions for soups to make and foods they like/dislike. Making soup also helps us to use up our food donations of vegetables from local supermarkets. They take home the leftover soup and a recipe to try it again. The group have tried different ingredients as well - butternut squash was new to most.

Any Body Can Cook has worked with Active Wiltshire and Wiltshire Council in the past to provide shared cooking and exercise sessions for different groups but this is the first Share a Pot scheme.

Having set up the group together with Healthier communities it would be great to be able to continue the shared project beyond the initial 8 weeks, as the participants have said they really like the combination of soup and sport.

Share a pot/seated sport gives them something to look forward to in the week, at the last session one of them said: "When we are fed up on Wednesday, we know we have this to come to on Friday!"

Catherine Maxwell
Any Body Can Cook





Wiltshire Council: Healthier Communities Project

Introduction

Healthier Communities is a 3-year project funded through Sport England's Tackling Inactivity and Economic Disadvantage funding programme. The project aims to increase levels of physical activity amongst inactive individuals in 10 Lower Super Output Areas (LSOAs) in Wiltshire with high levels of disadvantage and where sport and physical activity levels are known to be low. The Healthier Communities project will use an estate-based delivery model to engage the target audience meaning delivery will take place in the heart of local communities. This approach will help remove barriers including cost, transport and time constraints.

Target audience

The target audience for the project are inactive individuals (Less than 30 minutes of physical activity per week) aged 16-74 residing in 10 LSOAs in Wiltshire with high levels of disadvantage and where sport and physical activity levels are known to be low.

Prior to the project application to Sport England Wiltshire Council conducted a consultation of the target audience with a view to gaining a more detailed understanding of current levels of physical activity, barriers to participation and key motivators for individuals to engage in physical activity. The consultation included an online survey and face to face focus groups in each area.

Delivery locations for the project are: -

- Trowbridge John of Gaunt - Studley Green
- Trowbridge Adcroft – Seymour
- Trowbridge Drynham - Lower Studley
- Salisbury St Martin's – Central
- Salisbury Bemerton – South
- Salisbury Bemerton – West
- Melksham North - North East
- Melksham North - South West
- Chippenham Queens – East
- Calne Abberd – South

Rationale

Sport England's Active Lives survey shows 25.6% of adults are inactive nationally. This figure increases dramatically amongst individuals who reside in areas with high levels of disadvantage with 32% of individuals from NS-SEC groups 6-7 and 37% from NS-SEC group 8 taking part in less than 30 minutes of activity each week.

The 2011 census shows that there are 28,720 Wiltshire residents living in the localities targeted by the Healthier Communities project across all NS-SEC categories. 10,483 of these individuals fall within NS-SEC groups 6-8 and these individuals are likely to take part in less than 30 minutes of activity each week based on Sport England research.

The Healthier Communities project will specifically target these individuals with appropriate physical activity provision, helping to increase activity levels and reduce health inequalities.

Delivery Model

A Healthier Communities project coordinator (in place since January 2019) is in the process of developing and implementing a bespoke physical activity plan for the target areas in Salisbury, Trowbridge and Melksham. Chippenham and Calne community areas will follow towards the end of 2019.

The project will use a community led delivery model that ensures the needs of the target audience continue to be met throughout the project. The project model will look to break down the known barriers the target group face including, lack of time and cost. The impact of these barriers will be reduced by delivering affordable, estate-based activity which respondents from our consultation

identified as a means of increasing activity levels. Where feasible the project will take an asset-based community development approach, working with and upskilling residents as volunteer physical activity hosts/activators.

The project coordinator will work with on the ground partners who are already engaging appropriate individuals and look to develop trust, respect and new relationships within the target estates. This will be achieved by using direct mail, having a visible presence on estates and by deploying engaging staff who identify the target audience, allay fears and ultimately engage individuals in activity.

Project Position

The project branded as Healthier Communities has developed with a logo and relevant promotional/marketing tools now in place. A launch event was delivered in May 2019 and initial physical activity opportunities have been implemented in 3 of the 5 community areas. By working on the ground, the process of identifying community champions and other volunteers to assist project delivery has started.

Currently the project is delivering a range of opportunities to 8 of the 10 target areas including This Girl Can (TGC), walking sports, led walks, seated sports, outdoor Boot Camps and individual free gym memberships.

Intended Outcomes

The intended outcomes of the project include: -

- Increased levels of physical activity amongst inactive individuals from NS-SEC groups 6-8, ensuring activity increases above 30 minutes each week.
- Positive change in participant attitudes/behaviours towards sport and activity participation across target delivery locations.
- A network of physical activity champions and volunteers who benefit and gain experience through volunteering, training and frontline delivery, helping improve their self-worth and employability.
- A sustained legacy of sport and activity participation/opportunities in target delivery locations beyond the project's 3-year lifespan.

Alignment to local and national priorities

Wiltshire Council priorities include creating stronger more resilient communities, protecting the most vulnerable and ensuring personal/community wellbeing. The Healthier Communities project aligns to these by delivering physical activity interventions that will improve physical/mental wellbeing amongst vulnerable residents experiencing greater health inequalities, multiple disadvantage and low incomes.

Partners consulted during project development include the County Sports Partnership, community safety, citizens advice, town councils, resident associations, housing associations and community groups. The shared priorities this work addresses include increasing physical activity participation, health improvement, training and employability, social mobility, community cohesion and crime reduction.

Healthier Communities will contribute to outcomes set out in the *Government's Sporting Futures: A New Strategy for an Active Nation (DCMS 2015)* as follows: -

Physical wellbeing: By targeting participants currently doing less than 30 minutes activity, with suitable sport and activity interventions tailored to their needs, allowing individuals to benefit from the associated health benefits of sport and activity participation.

Mental wellbeing: Sport and physical activity are proven to improve mental health, self-esteem and confidence and reduce social isolation, a known cause of depression. There are high numbers of

individuals suffering with these issues within our target communities and attendees will experience improved mental health, positively impacting other areas of their life.

Individual development: In addition to the project supporting individual development through improved physical and mental health, volunteers supporting delivery will also benefit from training, qualifications, mentoring and experience of frontline delivery which can help improve self-worth, employability, social mobility and associated skills including leadership and communication.

Social and community development: The community led model will require individuals across communities to work together towards common goals, improving social and community cohesion and allowing diverse groups to better understand each other.

Economic development: Our project will impact on economic development by improving the mental health, confidence, self-worth and key skills of those participants and volunteers who are not currently in work, increasing their employment prospects.

Furthermore, the project is aligned to Sport England's national priorities set out in '***Towards an Active Nation' (SE 2016 -21):*** -

- Tackling inactivity
- Volunteering opportunities
- Recruitment of more diverse volunteers
- Working locally
- Regular and meaningful engagement in sport and physical activity
- More resilient habits

Public Health England's ***Strategic Plan for the next 4 years: better outcomes by 2020*** lists a key driver as increasing 'health and wellbeing and reducing inequalities' this is also aligned to the aims of the Healthier Communities project.